

The  GNOME™ Conference  
**GUADEC**

Slow progress on app save/restore support

Philip Withnall  
Endless

`philip@tecnocode.co.uk`



## What is app save/restore support?

- 🐾 Reopening an app in the same state as it was when it was closed
- 🐾 Closing by user action or by system policy
- 🐾 gnome-session used to support a limited version of this in the olden days

## Use cases

- 🐾 Restore apps to largely the same state when logging out and in again
- 🐾 Restore apps to largely the same state if they are killed and later restarted by the session manager due to resource constraints
- 🐾 Restore apps to largely the same state if they are updated and restarted due to an update (e.g. flatpaks)
- 🐾 Allowing apps to choose *not* to be restored (even if the data is available) if it would not be appropriate

## Use cases

- 👉 **Not:** Allowing apps to checkpoint their state or provide an undo stack
- 👉 **Not:** Allowing apps to be restored if they are killed unexpectedly, crash, or power is lost

# Main components

**App** Decide what to save and restore

**Session manager** Store the list of apps to restart, manage saving and restoring them  
👉 (While we're there: might as well store the apps' data too)

**UI toolkit** Serialise/Deserialise the app's UI

**Shell** Decide when to kill/restart an app due to lack of resources

## Proposed architecture

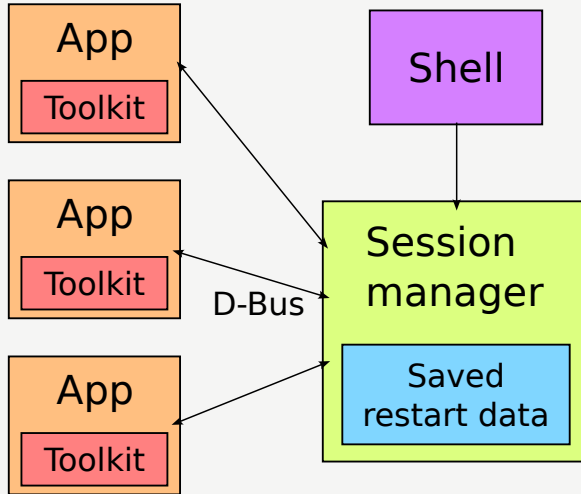


Figure: Proposed system architecture

## Proposed architecture

- 🐾 Extend the session manager protocol
- 🐾 Apps get their restore data when they register with the session manager
- 🐾 Save their data when the session ends (if they're still running)
- 🐾 Expose their data on `org.gtk.Application` as well, so it can be queried any time
- 🐾 Data is an arbitrary `GVariant`

# Proposed architecture: restoring

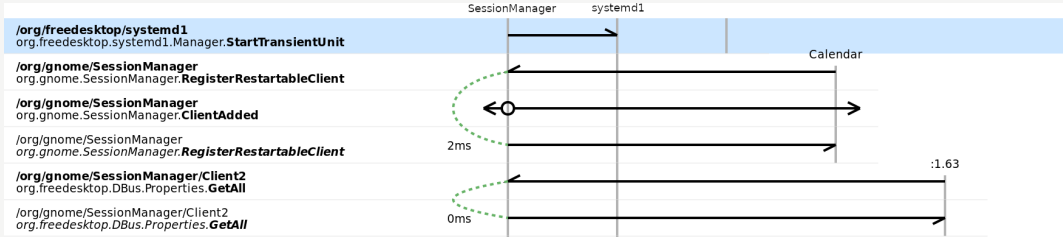


Figure: Registering a restartable client on session start



# Proposed architecture: saving

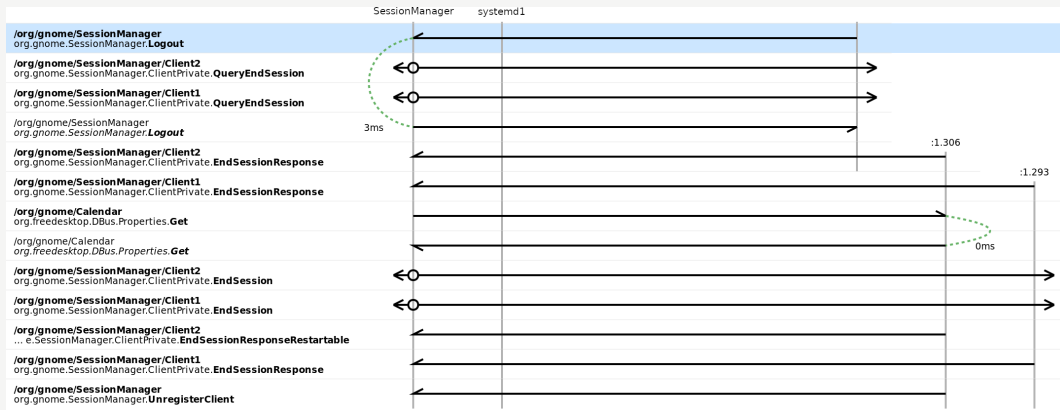


Figure: Saving app state when ending the session

## Application interface

```
struct _GApplicationClass
{
    GVariant *(* build_restart_data) (GApplication *application,
                                     char **out_tag);

    void (* consume_restart_data)(GApplication *application,
                                  const char *tag,
                                  GVariant *data);
};
```

## What's implemented?

- 🐾 Application interface is ready for review in GLib
- 🐾 Session manager API changes ready for initial review
- 🐾 GTK session management changes are the right shape
- 🐾 GTK widget tree serialisation/deserialisation not done
- 🐾 Shell integration not thought about

## Current problem points

- 🐾 Little thought given to non-GNOME desktop, non-GTK apps
- 🐾 Little thought given to XSMP apps
- 🐾 Prototype for GTK serialisation is a few years old and I haven't incorporated it
- 🐾 API has to be stable, so it has to be right

## What's next?

- 🐾 Help to validate the architecture
- 🐾 Come to the GTK BoF session (Saturday, 10:00)!
- 🐾 Landing some initial bits
- 🐾 gnome-session changes
- 🐾 Future work on GTK and Shell

## Miscellany

Slide source <https://gitlab.gnome.org/pwithnall/guadec-app-save-restore-presentation-2023>

Glib merge request

[https://gitlab.gnome.org/GNOME/glib/-/merge\\_requests/683](https://gitlab.gnome.org/GNOME/glib/-/merge_requests/683)

gnome-session branch <https://gitlab.gnome.org/pwithnall/gnome-session/-/tree/session-restore>

GTK branch <https://gitlab.gnome.org/pwithnall/gtk/-/tree/save-state>



*Creative Commons Attribution-ShareAlike 4.0 International License*

Beamer theme: <https://gitlab.gnome.org/GNOME/presentation-templates/tree/master/GUADEC/2023>